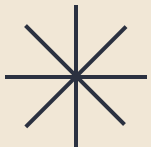
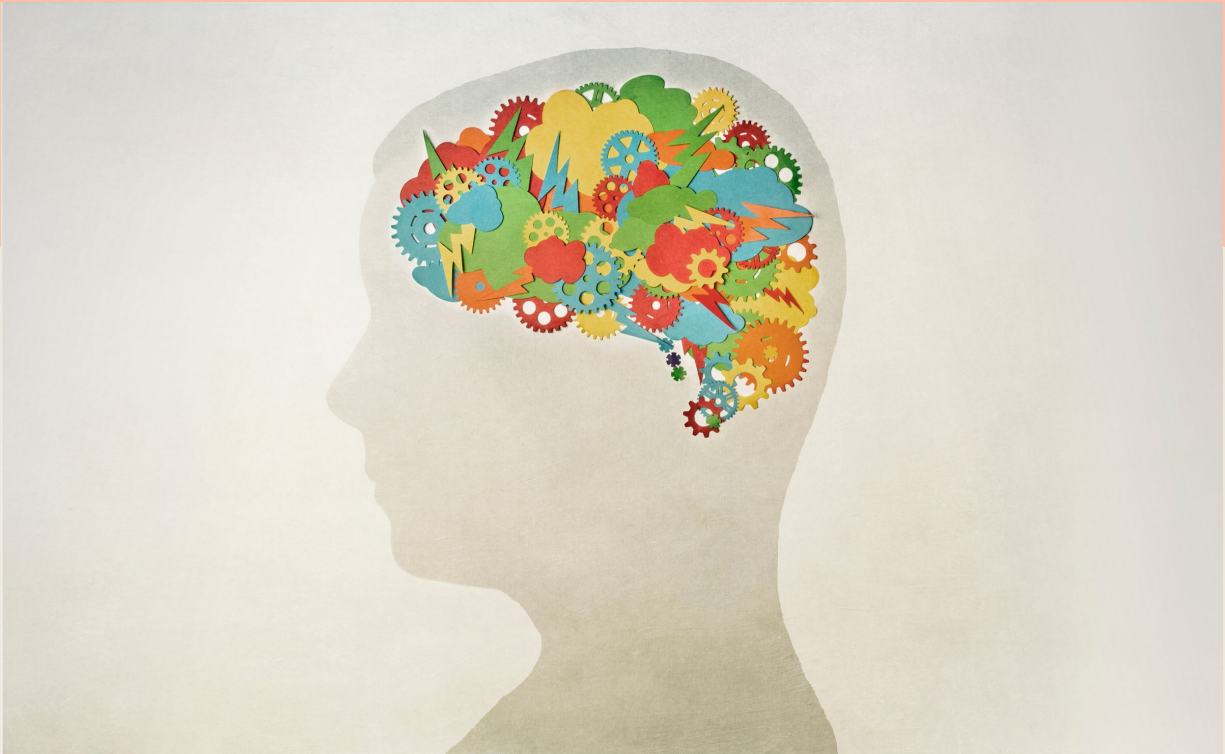
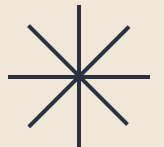


# [NEURO]PSYCHOLOGICAL TESTING

WHAT YOU NEED TO KNOW

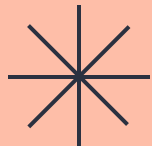


CHASE ESPINOZA, PSY.D.  
CLINICAL NEUROPSYCHOLOGIST CA PSY29339



# What is Neuropsychology?

- Neuropsychology is the study of brain function as it relates to behavior, cognition, emotion, and biology
- Clinical neuropsychology is a healthcare discipline that integrates and applies both functional neurobiology and clinical psychology



## Why do I need neuropsychological assessment?

- Neuropsychological evaluation can further inform you, the patient, of your current state of neurological and psychological health
- Testing can reveal signatures (profiles) of various abnormalities, pathologies, and disorders
- Neuropsychological evaluations are completed when cognitive functions, brain performance, and specific behavioral functions must be directly assessed with precise metrics
- Evaluations are engineered to inform effective treatments and enhance care from your providers

## Why was I referred?

- Differentiating diagnoses
- Discerning personality complexities from psychiatric or neurologic disorders
- Treatment recommendations
- Assessment of memory, processing, learning, motor function, language, visual/auditory perception
- Diagnostic clarification
- Tracking of treatment response
- Assessment of behavioral/mental health needs and changes over time
- Assessment of disability or functional challenges

# What is involved in neuropsychological evaluation?

- Evaluations, including various performance-based tests, are the most common practice of clinical neuropsychology
- Neuropsychological testing involves direct examination of localized brain functions and neural network activity through observation, scoring, and statistical analysis
- Evaluations can include clinical interviews, interviews with loved ones or caregivers, self-report rating scales, cognitive and motor performance tests, and review of records such as EEG, MRI, hospital discharge summary, lab work, medical chart notes
- Testing requires no preparation and is usually completed in a total of between three and four hours, with the examination occurring over one or two in-person appointments
- Results from neuropsychological testing are provided in a clinical feedback appointment and transmitted to your referring physician or other care providers



# Areas of Assessment

- Psychiatric and medical history
- Intellectual abilities
- Clinical syndromes
- Personality, family system, support system, and relationships
- Quality of life
- Educational and occupational history and performance
- Attention, memory, language, motor, visual/auditory, executive

# Referring Concerns

- Psychiatric symptoms (anxiety, mood, trauma, obsessive-compulsive, psychotic, etc.)
- Neurodevelopment disorders (autism, processing/sensory, attention-deficit, etc.)
- Personality disorders, family conflict, sleep disorders, substance abuse
- Learning disabilities (dyslexia, dysgraphia, dyscalculia, auditory processing disorder)

# What to Expect From Your Evaluation

- Affordable and insurance-based neuropsychological testing services from a specialist who practices exclusively in testing and evaluations
- Assessments include clinical interview, review of relevant records (medical, mental health, etc.), interview, and a carefully selected variety of tests
- Follow-up consultation, care coordination with other providers
- Services provided in an outpatient office setting or via telemedicine, if needed (and if appropriate)
- Reports are constructed to provide directly to healthcare providers, school, family members, etc. (on a basis of consent/preference)
- Feedback session for review of results, report guidance, discussion of recommendations, and patient/family Q&A
- All evaluative reports include summary, diagnoses, and individualized treatment recommendations, and appropriate resources

It takes 20,000 hours to be an expert...

# CONTACT DR. CHASE



DrChasePsychology@gmail.com



(949) 689-5402



[www.DrChasePsychology.com](http://www.DrChasePsychology.com)



15615 Alton Pkwy., Suite 450

Irvine, CA 92618

